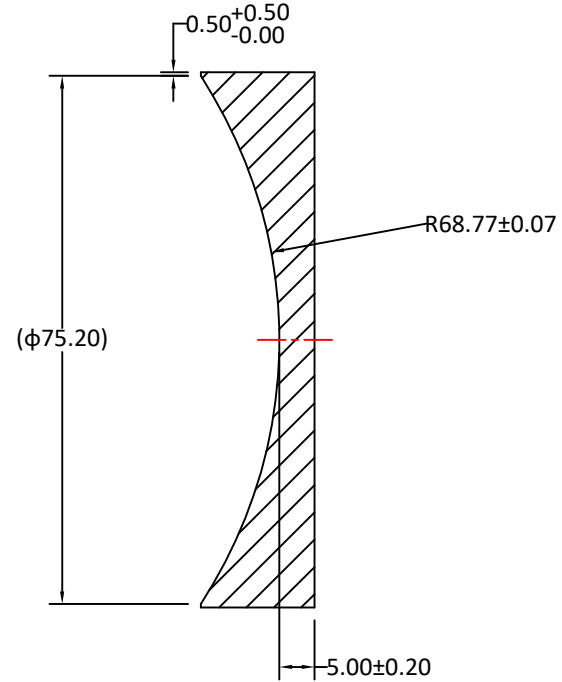
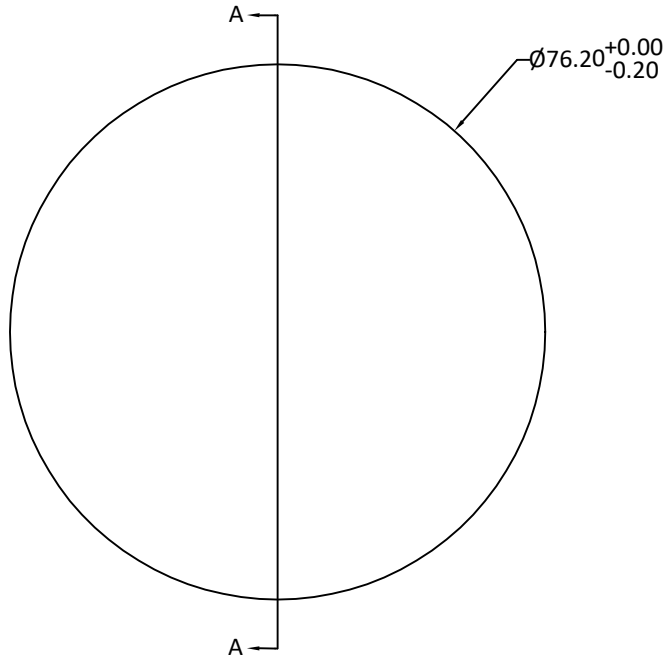


RADIUS	R TOL	POWER	IRRG	CA	DIA	DIA TOL	MATERIAL	INDEX	CT	CT TOL
-68.77 CC	±0.07	3	0.5	90%	76.20	+0/-0.20	JGS1		5.00	±0.20
Plano	-	3	0.5	90%						



SECTION A-A

Notes:

1. ALL DIMENSIONS IN MM
2. TOLERANCE UNLESS SPECIFIED ± 0.10
3. MATERIAL: GRADE B, FA PER MIL-G-174, FUSED SILICA JGS1, ROHS COMPLIANT
4. MANUFACTURE PER MIL-PRF-13830
5. POLISH TO TESTPLATE WITHIN POWER AND IRREGULARITY INDICATED (FRINGES)
6. FOCAL LENGTH(EFL): $-150.00 \pm 1\%$
7. SURFACE QUALITY : 40-20 SCRATCH-DIG
8. CHAMFER EDGES: $0.5 \times 45^\circ$ MAX UNLESS SPECIFIED
9. CENTRATION TOLERANCE: 1.0' MINUTES MAX
10. COATING: UNCOATED

UNLESS OTHERWISE SPECIFIED:		NAME	DATE	CIZ OPTICAL MANUFACTURER FROM CHINA	
DIMENSIONS ARE IN mm		DRAWN	Sally Song	11.18.24	TITLE: DIAMETER 76.20MM, EFL -150.00MM, JGS1 PLANO CONCAVE LENSES
TOLERANCES:		CHECK			
FRACTIONAL \pm		ENG APPR.			
ANGULAR: ± 3 ARC MIN		MFG APPR.			
TWO PLACE DECIMAL: ± 0.10		QA			SIZE A
THREE PLACE DECIMAL: ± 0.05		COMMENTS			
INTERPRET GEOMETRIC TOLERANCING PER:					REV 0
MATERIAL H-K9L					
FINISH					
DO NOT SCALE DRAWING	PROJECT NO.	SCALE:	WEIGHT:	SHEET 1 OF 1	