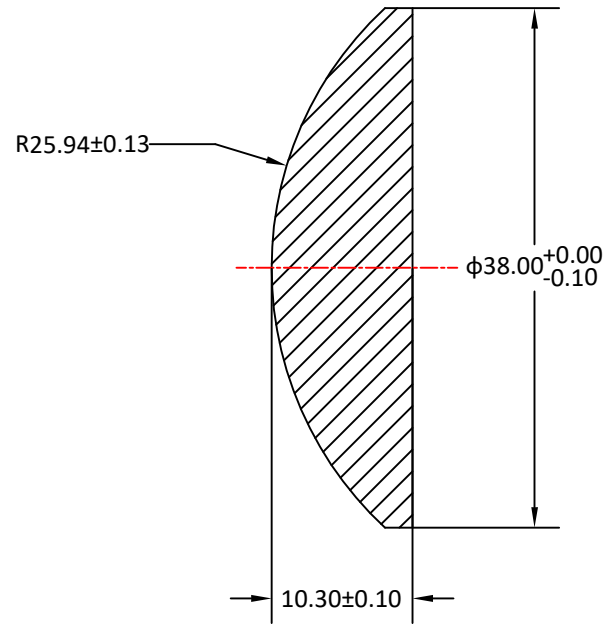
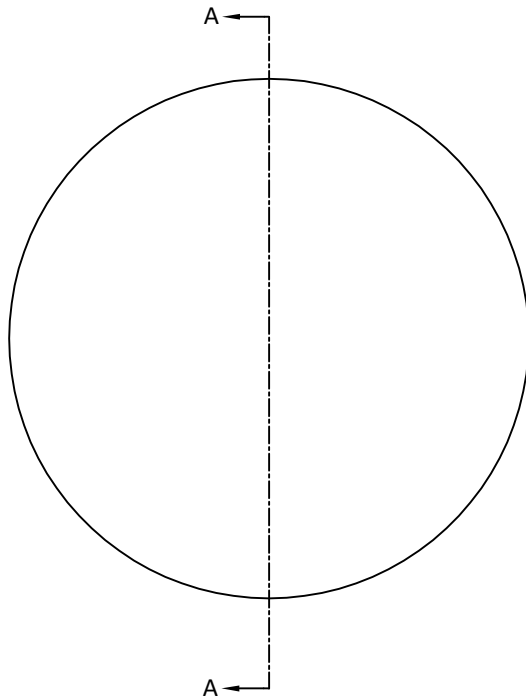


RADIUS	R TOL	POWER	IRRG	CA
25.94 CX	±0.13	3	1	90%
Plano	-	3	1	90%


DIA	DIA TOL	MATERIAL	INDEX	CT	CT TOL
38.00	+0/-0.10	H-K9L	517642	10.3	±0.10



SECTION A-A

Notes:

1. ALL DIMENSIONS IN MM
2. TOLERANCE UNLESS SPECIFIED ± 0.10
3. MATERIAL: OPTICAL GLASS H-K9L
4. MANUFACTURE PER MIL-PRF-13830
5. POLISH TO TESTPLATE WITHIN POWER AND IRREGULARITY INDICATED (FRINGES)
6. FOCAL LENGTH(EFL): $50.00 \pm 2\%$
7. SURFACE QUALITY : 40-20 SCRATCH-DIG
8. CHAMFER EDGES: $0.5 \times 45^\circ$ MAX UNLESS SPECIFIED
9. CENTRATION TOLERANCE: 1.0' MINUTES MAX
10. COATING: UNCOATED

UNLESS OTHERWISE SPECIFIED:		NAME	DATE		
DIMENSIONS ARE IN MM TOLERANCES: FRACTIONAL \pm ANGULAR: ± 3 ARC MIN TWO PLACE DECIMAL: ± 0.10 THREE PLACE DECIMAL: ± 0.05		DRAWN	Ama Liu		
INTERPRET GEOMETRIC TOLERANCING PER:		CHECK	Eva Du	7.20.24	TITLE: DIAMETER 38MM, EFL 50.00MM, H-K9L PLANO CONVEX LENS
MATERIAL H-K9L		ENG APPR.			
FINISH		MFG APPR.			
DO NOT SCALE DRAWING		QA			SIZE A
PROJECT NO.		COMMENTS		DWG.NO. L-PLCX-050_38	REV 0
		SCALE:	WEIGHT:	SHEET 1 OF 1	